



# The Quarterly NATIONAL NEWSLETTER Sept - Nov 2023

Information and Resources for the Printmaking Community of Aotearoa, New Zealand.

## Matters of Interest

We would encourage people to go to the PCANZ website <https://www.printcouncil.nz/> regularly, as it is kept up-to-date and is a useful resource...

The newsletter is posted there plus back issues via the News Feed section.

Social media - PCANZ has a public Facebook page and Instagram

FB

<https://www.facebook.com/printcouncilnz>

Insta

<https://www.instagram.com/printcouncilnz/>

- please keep us in touch with any important posts that could be included.

Are you organising an event and want to promote PCANZ with information about membership? -

PCANZ has leaflets that can be downloaded from our website and printed off in A4 size or A5. - scroll down to the bottom of this page

<https://www.printcouncil.nz/join>

## **Small Print Travelling Exhibition 2023 –2024**

<https://www.printcouncil.nz/small-print-2023>

Small Print instructions and information are on the website - [www.printcouncil.nz](http://www.printcouncil.nz)

The Small Print was exhibited at Mangahai Artist Gallery from 23rd June to 2nd July, a successful sale of several prints.

**Greetings to you all. Kia ora, Talofa lava, Taloha ni, Mälō e lelei, Bula vinaka, Kia orana, Faka’alofa lahi atu.**

The daffodils and cherry trees are blooming and maybe it’s a sign for a bit more sun to lift our spirits. What a wet, wet winter it has been for most of us. The only consolation for me is that I have managed to spend a lot more time in the studio, as it has been almost impossible for me to venture outside into the garden. As a consequence there has been lots of experimenting and work being done. It has been a very enjoyable experience being a part of the Printpal project introduced by Marci Tackett. I have had the pleasure of getting to know my Printpals and receiving some beautiful prints from them. We are looking forward to the ‘All Square’ Exhibition, to be held in Napier, this October.

## **Summer School 2024**



<https://www.printcouncil.nz/summer-school-2024>

Summer School at Queen Margaret College, Wellington is now live on the PCANZ website and expressions of interest have been requested. **The workshops are very nearly full. If you haven’t already registered your interest do so now to make sure you don’t miss out.**

We’ll be asking for people to commit with payment in October. We have some inspiring New Zealand tutors confirmed for the workshops.

They are;

Lynn Taylor – 4 days ‘Navigating your artistic Landscape – Mentorship’

Marci Tackett – 2 days – ‘The Versatile Screenprint’

Jude Gordon – 2 days – ‘Silk mezzotint’

Vanessa Edwards – 2 days - “A” Maori approach to printmaking’

Numa MacKenzie – 2 days – Moana blocks/Moana prints’

Terrie Reddish – 2 days – ‘Wearable paper art jewellery’

Anna Layzell – 2 days – ‘Monoprinting with oil and cold wax medium

It will be an amazing experience and we’re so looking forward to it.

Congratulations to those members who sold.  
Next exhibition is in Gisborne - Lysnar House towards the end of September. The local newspaper is already booked to check out PCANZ wonderful show of A4 prints. Thank you Gisborne printmakers.

In October the Small Print will be at Wharf Gallery in Raglan, then onto Tennyson Gallery, Napier in early November for 2 weeks. Tennyson Gallery had the best record of sales for the last round, so we shall see if this can be repeated.

A big thanks to all of our 63 members who have participated in this affordable, travelling print exhibition that just keeps on moving around Aotearoa.

Happy Printing  
Rosalie and Julz

## All Square Exhibition 2023

<https://www.printcouncil.nz/all-square-exhibition-2023>

The Print Council of Aotearoa New Zealand Exhibition of 300mm x 300mm prints. This exhibition is open to all members of PCANZ. There is no set theme.

**Venue:** Community Arts Napier (CAN)

**Dates:** 27th October – 16th November 2023

**Opening:** Friday 27th October 5-7pm (to be confirmed)

## "WAYMARKERS"

**Toni Hartill**

**Solo exhibition and artist residency**

'From out of the blue studio gallery.18 Halse Place, Opunake, Taranaki

@threadthinker

9<sup>th</sup> Nov - 17<sup>th</sup> December

"Through richly layered mark making, artist's books, dioramas and assemblages, with an acute eye for detail and use of materials, Toni explores a visceral sense of belonging to the landscape of Aotearoa."

## Regional Reports

### Wairarapa Report – Jo Lysaght, Nick Brandon

Jo Lysaght arranged a "behind the scenes" visit to Te Papa on 14 June. We got to see some wonderful prints selected by Te Papa staff including NZ artists Philip Clairmont and E Mervyn Taylor plus some UK Lino artists such as Eileen Mayo.

(DS apologises as this was left off the last newsletter)



Nick Brandon & Jo Lysaght are holding a beginners workshop at Masterton Art Club on 23 September covering relief and drypoint methods.

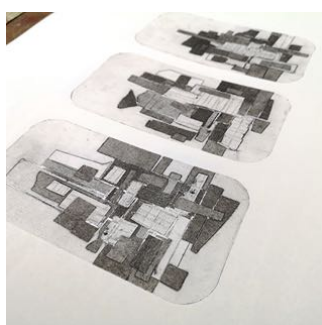
After attending Carole Shephard's outstanding summer school session in January, Nick Brandon was inspired to create a collaborative print project with 7 local artists. It was intended that each plate be printed sequentially on a long roll of paper, but there were a couple of technical difficulties with changing from relief to drypoint mid-way so it ended up in three parts. Local stitch artist Anne Benson has deftly joined the three panels together. We hope to be able to display this at Aratoi.



Photo of the completed work.

### Kapiti Coast Report - Hamish Macaulay

Kāpiti printmakers have been relatively quiet this quarter. A number of printmakers from the region have been attending the 3rd Sunday print sessions at TLC in Taita, and really enjoying the exchange of ideas and inspiration from Marci Tackett. Other printmakers have also been sharing their skills with the group, and these sessions continue to be educational and enjoyable.



Tape collograph by Hamish Macaulay, from this month's Sunday Session

Toni will be in residence throughout. Check the gallery website for opening hours and updates on talks, demos, workshops and gatherings.

Link to my profile and an intro to my exhibition:

<https://fromoutofthebluestudio.com/toni-hartill/>



### 'In Print'

An Exhibition including Anita Mudaliar and other PCANZ members will be held at BSA Gallery, Ponsonby Auckland from 29<sup>th</sup> August - 16<sup>th</sup> September. They look forward to seeing you there.



### Gisborne Report – Jean Johnston

An active group of innovative printers ensure our studios are well used. Two members are preparing for solo exhibitions later in the year and we will host Mel Tahata demonstrating how she prints one of her aluminium etchings. We are enjoying participating in PCANZ activities including Print Pals. Another exchange idea comes from one of our nautical members, Ninja Helmling, who sent us an unprinted post card. She made an image on a tetra pac and posted it to us when she stopped on the tiny island of Tristan Da Cuna recently. I printed it and sent it out to our members.



Print your own postcard

A big highlight for us recently was learning how to use the Aluminium Lithography process. We so appreciated Carole Sheppard and driver, husband John, braving our precarious highways in Tairāwhiti to teach the 2-day workshop. We have now set up a space for members to prepare plates and were able to purchase Toyo inks, hard brayers and silicon mats for the inking process using proceeds from sales of our book, 'We can't stop now'.

'Artists produce vibrant prints' was the title of an interview made with Carole and The Gisborne Herald's Arts Guide reporter. A photo of us all around our two presses showing off our prints also formed part of the article.



Inspiring print magic with Carole Sheppard

### Dunedin Report – Lynn Taylor

#### News Flash!

Dan Weldon is coming to Dunedin as a resident in the Caselberg House in Dunedin for February 2024. Many Print Council members have been to his workshops and I know one member has had a long-term friendship with him and even worked with him in the States. He is travelling with his partner and it sounds like some of his time in New Zealand is flexible (after the residency I imagine). In Dunedin we will get to see his film.

<https://www.productionhub.com/video/79050/trailer-for-lasting-impressions>

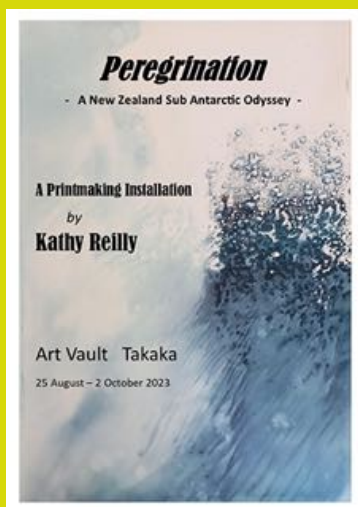
If you want to get in touch with Dan his email is [dan@solarplate.com](mailto:dan@solarplate.com)

## 'Peregrination'

by Kathy Reilly

A print installation based on a New Zealand Sub Antarctic Odyssey

– Art Vault, Takaka. 25<sup>th</sup> Aug – 2<sup>nd</sup> Oct



## 'Small Holes in The Silence'

Four geographically spread intaglio printmakers: Prue MacDougall, Kyla Cresswell, Nan Mulder and Catherine Macdonald come together in the exhibition 'Small Holes in the Silence'. Anchored by the exhibition title from the Hone Tuwhare poem 'Rain', the artists are connected in their individual exploration of environments, atmosphere and language.

31 October - 18 November 2023  
Opening event 2<sup>nd</sup> November 6 – 8pm

Print Demo 11<sup>th</sup> November 11am  
At  
RAILWAY STREET GALLERY + STUDIOS

8 Railway Street, Newmarket,  
Auckland 1023, New Zealand  
[www.railwaystreetstudios.co.nz](http://www.railwaystreetstudios.co.nz)

## PRINTOPIA 2024

There are many ways you can support the festival and get involved next year:

- **Be a participating artist** - email me with a proposal for a live printing event, talk, demonstration or workshop.

## Northland Report – Mark Graver, Joanna Fieldes

On Wednesday 28<sup>th</sup> June PCANZ members Ginny Guy, Megan Corbett and I met up for coffee with Mangawhai Artists at Bennetts Café in Mangawhai. I introduced myself as one of the PCANZ Northland representatives and talked of the wonderful opportunities available to PCANZ members. Some were lapsed members and hopefully they will rejoin, and hopefully too, we may gain some new members. We talked about getting together as PCANZ members to hold printmaking workshops, possibly in the Mangawhai Artists Workspace, where they have an A3 size printing press and/or in artists home studios.

We walked across the road and visited 'The Small Print' PCANZ exhibition at Mangawhai Artists Gallery. The prints looked great, and the general comment was "they were of a high standard".

Information about **Print Play** (copied from the Mangawhai Artists Newsletter):

Check out **Print Play** opportunities for printmakers at the **Art Workspace**

With interest in printmaking growing, and following shortly after **The Small Print** exhibition, we are opening the **Art Workspace** to printmakers in a series of monthly untutored sessions from July through to November.

Funded by **Creative Communities Scheme**, the purpose of these untutored sessions is to enable local printmakers to use the **Art Workspace**, with its printing press, to create their own work. The sessions are (for adults) **once a month on a Wednesday afternoon** from 1pm to 4pm **and evening** from 6pm to 9pm, with two 'interactive' sessions on **Sunday 24 September** for children and parents from 10am to 12 midday and 1pm to 3pm. See the poster below for dates.

There is no charge - thanks to funding from the **Creative Communities Scheme**. Note that some equipment and materials will be supplied but you will need to bring your own paper to print on.

If you'd like to know more please [email here](#), otherwise just turn up and start creating!



PCANZ Small Print exhibition, Mangawhai Art Gallery



## PRINT-PLAY

FOR ADULTS

MANGAWHAI ARTISTS WORKSPACE

12 JULY. 1-4pm. 6-9pm  
9 AUG. 1-4pm. 6-9pm  
13 SEPT. 1-4pm. 6-9pm

24 SEPT. Children and parent interactive day. 10-12am. 1-3pm.

11 OCT. 1-4pm. 6-9pm  
8 NOV. 1-4pm. 6-9pm

This is an opportunity for people to have access to the MAI workspace and printing press. Bring your ideas and have fun exploring the magic of print.

Some equipment and materials will be supplied- However you will have to bring your own paper to print on. This is not a tutored class, but help will be on hand- Come and have fun!

Kaipara District  
**creative**nz  
COMMUNITIES

MANGAWHAI ARTISTS  
WORKSPACE

- **Become a Print Pal** – this is a great way to make a donation to the festival and receive early access to workshops.
- **Volunteer** – we need experienced artist assistants. You'll receive one of our Printopia aprons and a meal as a thank you.
- **Apply to have a table at the Print Fair** – this could be with a group or individually.
- **Come along** – plan the trip, invite print friends, spread the word!

I look forward to seeing you all 3 – 5 May 2024!

Nga mihi nui,  
Ina Arraoui

[ina@printopia.nz](mailto:ina@printopia.nz)

027 347 0943

### Loan Presses Available

PCANZ Auckland loan press available for \$20.00 per week, available to all paid up members. Pickup/drop off:

-Contact Bridget Burnett

[bridget@nationalartsupplies.co.nz](mailto:bridget@nationalartsupplies.co.nz);

Work: 09 634 0325

Or 027 457 5271

PCANZ Upper South Island Loan press available for those in the South Island - \$20.00 per week, available to all paid up members. Pickup/drop off:

-Contact Jeff Lockhart

[jeff.g.lockhart@gmail.com](mailto:jeff.g.lockhart@gmail.com)

For further information:

<https://www.printcouncil.nz/press-hire>



### Taupo Report (Plateau Printmakers) – Maggie Dawson, Sally-Ann Davies



We're thrilled to share the latest happenings at Plateau Printmakers. In collaboration with PCANZ Winter Workshops, we recently invited local printmakers to explore the art of Myriorama. It was two Sundays filled with creativity, learning, and camaraderie that left everyone inspired. We are still gathering every fortnight at Maggie's. These gatherings have proven to be invaluable, providing us with an opportunity to share ideas and opportunities coming up.

Maggie has some exciting news after taking part in a couple of Parallel Printmaking Classes with Scottish Printmaker Deb Wing, Maggie's printmaking journey has taken an exciting turn. She has been invited to stay with Deb at her home in Scotland. There's no doubt that some captivating moments will unfold in Deb's studio. Maggie is also hoping to catch up with printmakers Joshua Miles and Laura Boswell when she is in their neck of the woods.

Sally-Ann is busy organising her Wedding. Well, actually two weddings, one in New Zealand on September 2nd in a friend's garden, let's hope it is a beautiful blue-sky day. The second one is in England in October with family. Sally-Ann is also running her popular Print and Wine evenings at the Mole and Chicken, which are becoming quite popular - a great way to inspire people to explore the fabulous world of printmaking.

Mayumi has been busy in her studio creating artworks for a number of galleries in Whanganui. With every exhibition, Mayumi's popularity as an artist continues to grow, and her success is well-deserved and inspiring.

It is great to say printmaking is alive and well in Taupo.

### Tauranga Report - Jackie Knotts, Nicol Sanders-O'Shea

Jackie is currently staying in Wales, UK and enjoying visiting galleries.

◀ Tai Timu Tai Pari is our exhibition promo. This is a 5 day exhibition at the Cargo Shed in Tauranga as part of the Tauranga Arts Festival 19-23 October. I will have a large print installation in this show that some printmakers may really enjoy.

**Nicol Sanders-O'Shea**

**Academic Leader**

Arts

P +6475578905

[Nicol.Sanders-O'Shea@toiohomai.ac.nz](mailto:Nicol.Sanders-O'Shea@toiohomai.ac.nz)

Windermere Campus, Tauranga

## Our People:

<https://www.printcouncil.nz/our-people>

## PCANZ Exec Members

### 2023:

#### Acting Chairperson:

Marion Bright

[info@printcouncil.nz](mailto:info@printcouncil.nz)

#### Treasurer:

Kathy Reilly

[treasurer@printcouncil.nz](mailto:treasurer@printcouncil.nz)

#### Secretary

Carolyn Currie

[info@printcouncil.nz](mailto:info@printcouncil.nz)

#### ExecMembers:

Kathy Boyle (past chairperson)

[kathy.boyle@xtra.co.nz](mailto:kathy.boyle@xtra.co.nz)

#### Exhibitions officer

Lynne Wilburn

[mailto:exhibitions@printcouncil.nz](mailto:mailto:exhibitions@printcouncil.nz)

Heather Partel

[heatherpartel@inspire.net.nz](mailto:heatherpartel@inspire.net.nz)

#### Events – Summer School

Diana Smallfield

[diana.smallfield@gmail.com](mailto:diana.smallfield@gmail.com)

Marci Tackett

[marci@marcietackett.com](mailto:marci@marcietackett.com)

Esther Hansen (observer)

[ehansen@pukekohehigh.nz](mailto:ehansen@pukekohehigh.nz)

#### Regional Reps:

[info@printcouncil.nz](mailto:info@printcouncil.nz)

#### Northland

Mark Graver

[mark@markgraver.com](mailto:mark@markgraver.com)

Joanna Fieldes

[Joanna@fieldes.co.nz](mailto:Joanna@fieldes.co.nz)

#### Auckland

Di Smallfield

[diana.smallfield@gmail.com](mailto:diana.smallfield@gmail.com)

Erinna Law

[erinnarlaw@hotmail.com](mailto:erinnarlaw@hotmail.com)

#### Central Waikato

#### Hamilton:

Gemma Reid

[gemmaeidart@gmail.com](mailto:gemmaeidart@gmail.com)

Elane Wiseley

[elanewiseley1@gmail.com](mailto:elanewiseley1@gmail.com)

#### Tauranga:

Jackie Knotts

[jackie.knotts24@gmail.com](mailto:jackie.knotts24@gmail.com)

#### Taupo:

Maggie Dawson

[maggie\\_dawson1@gmail.com](mailto:maggie_dawson1@gmail.com)

Sally-Ann Davies

[sallyannartist@gmail.com](mailto:sallyannartist@gmail.com)

## Wellington Report – Margaret-Ann Barnett

Local printmakers continue to be active with monthly Sundays being well attended and regular print days at the Hutt Art Society initiated by Emma West. Several local artists have exhibited work, including Marci Tackett who has just returned from a very successful show in Queenstown.

In August M-A Barnett and Susan Dey led a workshop at TLC on printing on plaster. Messy, but fun. We were excited to find that plaster will print successfully off almost any plate - we experimented with polyester lithographs, lino and woodcuts, and aluminium etchings and coated the finished tiles with resin. We've included photos from the day below

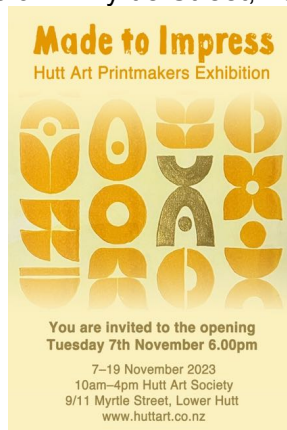


Prints on plaster by Julie Moonlight, K Patterson, Michelle and others.

In September Julie Moonlight and Kris Lockett will demonstrate using recycled materials such as tetrapacs to create printing plates. We're looking forward to it already!

### Printmaking at the Hutt Art Centre.

The Hutt Art Society is having a printmaking exhibition called 'Made to Impress'. It will feature works from fourteen local printmakers in a range of different techniques. It is on from the 7<sup>th</sup>-19<sup>th</sup> November, 10am-4pm daily. There will be an opening night on Tuesday 7<sup>th</sup> November at 6pm, all are welcome. The address is 9/11 Myrtle Street, Lower Hutt



The Hutt Art centre has a great printmaking studio equipped with three printing presses. There are two sinks, a good size working space and some communal printmaking tools available. In order to use the facilities, you need to become a member of the Hutt Art Centre, which costs \$135 yearly. This gives you access to the print studio seven days a week with onsite parking available.

If you would like more information about the Hutt Art Centre, or to visit the printmaking studio, contact Emma West via email: [emmawestartist@gmail.com](mailto:emmawestartist@gmail.com) or phone: 0210439362. <https://www.huttart.co.nz>

## East Coast

### **Gisborne/Tairāwhiti:**

Jean Johnston

[jeanbairdjohnston@gmail.com](mailto:jeanbairdjohnston@gmail.com)

### **Napier /Hastings:**

Cate Goodwin

[goodwincate@gmail.com](mailto:goodwincate@gmail.com)

Pam Hastings

[pamh107@gmail.com](mailto:pamh107@gmail.com)

## West Coast (NI)

### **Whanganui/Palmerston North:**

Julia Ellery

[julia.ellery39@gmail.com](mailto:julia.ellery39@gmail.com)

Rachel Stockley

[themagpieshandbag@hotmail.com](mailto:themagpieshandbag@hotmail.com)

### **Taranaki/New Plymouth:**

Mark Raymer

[mar0240@gmail.com](mailto:mar0240@gmail.com)

Dimphy de Vaan

[info@DimphyArt.com](mailto:info@DimphyArt.com)

## Wellington /Wairapa

### **Wairapa:**

Nick Brandon

[nickbrandon75@gmail.com](mailto:nickbrandon75@gmail.com)

Jo Lysaght

[jo@satelitedesign.co.nz](mailto:jo@satelitedesign.co.nz)

### **Wellington:**

Margaret Ann Barnett

[margaretannebarnett@gmail.com](mailto:margaretannebarnett@gmail.com)

Kris Lockett

[khikhi@gmail.com](mailto:khikhi@gmail.com)

### **Kapiti Coast:**

Hamish Macaulay

[Hamish\\_macaulay@gmail.com](mailto:Hamish_macaulay@gmail.com)

### **Marlborough/Nelson**

Jeff Lockhart

[jeff.g.lockhart@gmail.com](mailto:jeff.g.lockhart@gmail.com)

## Upper South Island

### **West Coast (SI)**

Ruth Vaega

[ruth@vaega.nz](mailto:ruth@vaega.nz)

Kate Buckley

[buckleykb@gmail.com](mailto:buckleykb@gmail.com)

### **Christchurch**

Carolyn Currie

[Currymuncher0727@gmail.com](mailto:Currymuncher0727@gmail.com)

Vicki Mangan

[vicmanganart@gmail.com](mailto:vicmanganart@gmail.com)

## Lower South Island

### **Dunedin:**

Lynn Taylor

[lynnartaylorartist@gmail.com](mailto:lynnartaylorartist@gmail.com)

Marion Mertens

[m8marion@gmail.com](mailto:m8marion@gmail.com)

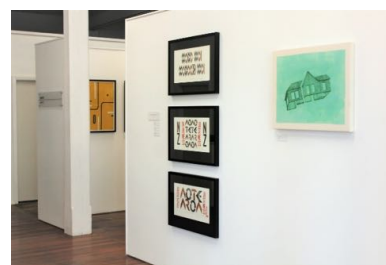
## Palmerston North/Whanganui Report – Rachel Stockley, Julia Ellery

This quarter has been an active one in our region. We have welcomed several new members who bring a range of experience with them.

At our June meeting we worked collaboratively on printing the blocks/plates we had made for a garden project. Printing onto brown paper and overprinting some of the works yielded interesting results.



At the end of June, we opened our group exhibition 'In Series' at Space Gallery in Whanganui. This ran through till the 8<sup>th</sup> July and involved print artists from Taranaki through to Palmerston North. 18 Artists took up the challenge of an 8-week time frame to produce 3 works in series and there was a diverse range of work on display. We hope to make this an annual event on our regional print calendar going forward.



At our July meet we ran a basic workshop on printing with recycled packaging. We explored tetrapac, cardboard and found out how exciting melting plastic can be. Some cut panels or pieces, others worked with the inherent nature of the materials on offer.



**From the Exhibition  
'Women beyond the  
Politics'**



Joanna Fieldes – *She's Pumped*

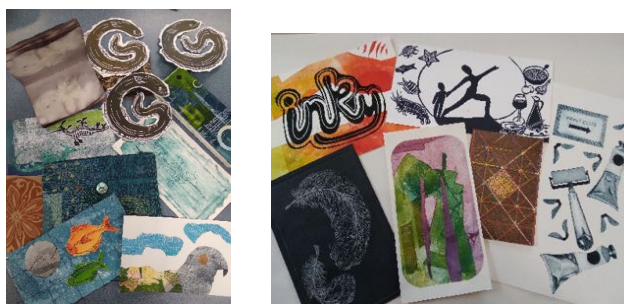


Diana Smallfield – *A Collaboration*



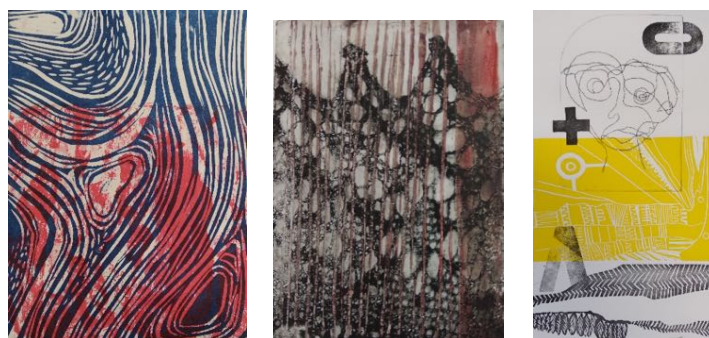
Vanessa Wairata Edwards  
– *Hinētītama*

Those involved with the PCANZ Postcard Challenge brought and shared either the cards they were making or had received to date. There was such a wide variety of print styles on offer. It was interesting to hear what themes people had set within their groups.



Some of the postcards made and received

At our August meeting we all brought old plates to share, printing, overprinting and combing different elements to create something new. We now have two presses available at our meetings which is great when we are working collectively.



If you are in our region during October don't miss the 2023 Art Trail Manawatu. This is a free event. Artists will be opening their studios and several Art Hubs with multiple artists will also be in operation.

A *Trail Mix* exhibition, showcasing work from each of the artists involved, held at Square Edge Arts Centre over the entire month. A FREE guidebook and maps which showcase the work and locations of our artists is available.

Chances to win artworks

Make a weekend of it – join us as artists or enjoy a drive through our beautiful Manawātū region and chat to our wonderful artists over the art trail weekend of **October 14th and 15th, 2023.**

**West Coast Report - Ruth Vaega**

It has been a quiet quarter on the West Coast.

We have had to postpone our printmaking course in Reefton until later in October as two of our members are visiting family in fire-torn Canada so we'll advertise it then and give a full report of how it went in the next newsletter.



## Hawkes Bay Report – Pam Hastings and Cate Godwin

Following our very successful Progressive Print day in May, Kathy and Julz ran a workshop on a botanically themed Myriorama collaborative concept.

June's workshop was making a monoprint background and the 16 members were given an A6 soft cut lino piece to carve their image, to be finished at home.

The following month, in July, members overprinted backgrounds in a collaborative format to be made into a concertina style book joined in a variety of ways, or as a separate art piece. We have yet to see all results as some are not yet completed.

Because we had had such a busy few months, the August session was more relaxed with unfinished projects being worked on.

Last night, 25th August, was the opening of our 'East Side 6' exhibition at CAN very ably organised by Lisa Feyen. This included a variety of prints from our Inkers Group. The quality of prints improves every year and this year was no exception. It was great to see some work from those who attended the Progressive Print day.



Donna Tupaea – *Mareikura 1*



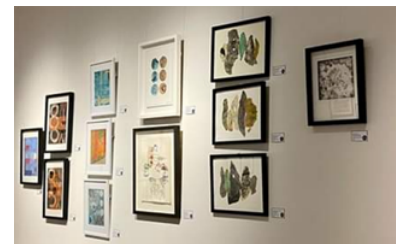
Prue MacDougall – *Floral Crown*



Faith Mc Manus - *Maorimiko*



Tania Lewis-Rickard – *Queen of Hearts Series*



From Lisa Feyen.

*'Tonight we opened 'East Side Story 6' - an exhibition of Hawke's Bay printmaking @creativeartsnapier*

*Printmaking brings people together, it pushes boundaries, it creates community. Visit the exhibition over the next two weeks and you'll see the passion that goes into every piece. I organised this group show and I'm very proud it was so well received- but it couldn't happen without the enthusiasm of all the printmakers taking part. Love you all.'*

We have a membership of just over 30 with more new members filtering in. An exhibition, like we have at Creative Arts Napier for the next couple of weeks, always attracts new members. Lisa's lino workshops also attract newcomers.

Happy printing

Pam Hastings, Julz Henderson, Kathy Boyle and Cate Godwin (facilitators)

[#printmaking](#) [#printmaker](#) [#printmakingtutor](#) [#printmakingclasses](#)  
[#inkmothprintstudio](#) [#hawkesbayinkers](#) [#groupexhibition](#)  
[#openingnight](#) [#printmakingexhibition](#) [#eastsidestory](#)  
[#affordableart](#) [#multiples](#) [#printisnotdead](#) [#linocut](#) [#screenprinting](#)  
[#etching](#) [#solarplate](#) [#woodblock](#) [#drypoint](#) [#waterlesslithography](#)  
[#monoprint](#) [#editions](#) [#limitededition](#) [#communityarts](#)



Ina Arraoui – *My Mother's Tools 1*



Aimee Ratana - *Wahine*



Alexis Neal – *Wahine Toa*

### From Leaf/let Exhibition



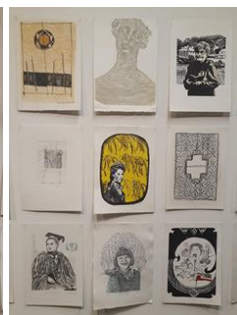
Prue MacDougall

### Auckland Report – Di Smallfield, Erinna Law

There has been quite a lot happening in Auckland over the past few of months with member's exhibitions and workshops.

Ina Arraoui has been running monthly workshops offering a range of skills and tutors at The Newmarket Station Square Studio such as Collagraphs by Celia Walker and Letterpress by Graeme Judd with others to come. Toni Moseley continues to run regular workshops out of Nathan Homestead, and Val Cuthbert has been busy running classes at the Estuary Art Centre such as printing without a press and pronto.

A great deal of energy and planning has gone into the 'Celebrate 130' Project organized by the Franklin Print Group. It features 130 A4 prints from around NZ and it coincides with the anniversary of NZ woman's suffrage. It is now showing at the Franklin Art Centre. This Exhibition is sitting alongside 'Women beyond Politics', which represents mana wahine educators from around Aotearoa. The following photos are from the opening on 19<sup>th</sup> August.



Prue MacDougall has had a very successful Exhibition 'Leaf/let' at the Railway Street Gallery.

In this series Prue printed directly onto a leaf. The printed image melds deep into the veins and creases of the oval shaped leaf. A very unique approach to printmaking



There is a 'Mono-print to Multi-Media' workshop planned for 16<sup>th</sup> September at the Lake House, Takapuna and a meet up to share practice in November at the Railway Street Studio. This will coincide with the 'Small Holes in The Silence' Exhibition. We look forward to seeing as many people as possible there.

**From the Exhibition  
'Women beyond the  
Politics' – continued**



Jude Gordon – *Thin Skin*



Kate Rivers – *Patch 1*



Rachel Schanzer - *Nourished*

**Nelson, Marlborough, Tasman – Jeff Lockhart**

This quarter, the Nelson, Tasman, Marlborough members of PCANZ have been getting together for a whole day of printmaking at NMIT-Te Pūkenga, NMIT. Rather than being focused on a particular project we decided that it would be good to get together to carry on with our own work, but in doing so, sharing ideas and techniques with each other. A number of non-members have also attended, meaning, a greater range of people are being exposed to our printmaking bug!! Many people have focused on relief printing, but intaglio and chine-collé have made an appearance. Screen-printing will be in the mix as well, at the next gathering, as will a collaborative group project that we can report on next time!!



**Taranaki/New Plymouth Report – Dimphy de Vaan, Mark Raymer**

While we have not met formally as a group for a spell. I would like to take this opportunity to highlight the recent accomplishments of some of our individual members.

Member MB Stoneman was a participant in the exhibition 'State of Nature'; exploring the stories of our native forests through the botanical paintings of artist Fanny Bertha Good (1860-1950) and the experiences of her family in colonial Taranaki - held at the Puke Ariki Museum. Stoneman was tasked to create works that responded to the botanical nature of our native forests.



MB Stoneman

Stoneman created a 4 panel multi process print that included; etching, relief, and chine colle. She also created a letterpress poster featuring Fanny B Good. On the 16th of August, Stoneman gave an artist talk where she covered her research into the subject matter and how she approached her response.

Members Jennifer Halli and Antonia O'Mahony are hosting a pop up printmaking event 'Immaterial' at Might/Could Gallery in New Plymouth in July. Jennifer and Antonia's exhibition 'Im/material' features this month at Jennifer's gallery, Might/Could Project Space, Currie St, New Plymouth. The project has been a year in the making, and had over 100 participants from many community groups and well over 500 monotypes have been made that will make up the two story high sculptural installation. It honours the invisible and unpaid labour often done in the domestic setting. It opens on Saturday 2nd September at 4pm and will run throughout the month.



Antonia O'Mahony  
Gleaner Watched by  
Planets

Check insta: @might.could for more info. Here is a link to a radio interview they gave about the project:

<https://accessmedia.nz/Player.aspx?eid=cda2943c-6d14-499b-9291-8ac1de9baa0f>

Jennifer Halli and her Partner Chē Rogers also recently had a write up in the local New Plymouth newspaper about being a prolific power couple in the art world. They are both, along with Member Jenny Bielawski in the next exhibition at the Percy Thompson Gallery in Stratford; 'Abroad: What's in the Suitcase'. The exhibition opens Friday 25th of August and will then travel to other galleries around Aotearoa.



Jennifer Halli  
Press report



Mark Alister  
Raymer –  
Sure-Footing

Members Antonia O'Mahony and Mark Alister Raymer were both selected for their individual works as finalists for the Parkin Drawing Prize, which is currently exhibiting at the New Zealand Academy of Fine Arts in Wellington.

Member Dimphy de Vaan has an exhibition coming up at The Village Gallery in Eltham. She will be showing print work as well as paintings and pottery. The Exhibition is shared with Mark Bellringer.

The Taranaki members definitely are happy to be Whanganui neighbours. They love getting their invites as well as their newsletter from them.

Nga mihi nui,

*Di Smallfield*

Di Smallfield  
Newsletter  
Coordinator